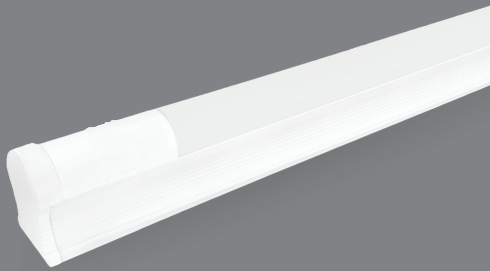


TECHNICAL DATA SHEET



TUBELIGHT T8 SHINE BRIGHT

TECHNICAL SPECIFICATION

Fitting Type	T8 Tube
Power Consumption	36 Watts (when on at full brightness) and approx 7.2 Watts when Dim
Operating Description	Stays on as long as motion detected, then goes to dim mode after 30 seconds of no movement
Microwave Sensor Range	4 - 6 Meter (Radius)
Sensor Type	Dimmable & On - Off
Voltage	220-240 V AC 50-60Hz
Lifetime	35,000+ hours
Colour Temperature	6500K , 4000K
Beam Angle	150°
Light Output	3600 lumen
Dimmable	Yes
Dimensions	1170mm/31mm/36mm(4ft)
Installation	Self install

DRIVER SPECIFICATION

Surge Protection	Up to 2.5kV
Efficiency	>90% At Full Brightness
THD	<15% At Full Brightness
Power Factor	<0.98
Functions	ON/OFF - Light will be ON if there is motion and automatically will be OFF when there is no motion detection for 30 Sec. DIM - Light will be at its full brightness if there is motion and automatically the brightness will be reduced to 20% when there is no motion detection for 30 Sec.
Microwave Sensor Range	4-6 Meter (Radius)