

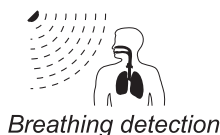
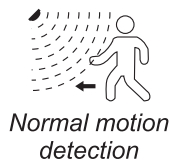
TECHNICAL DATA SHEET



NANO PRO-S (True Presence Sensor)

Features :

1. Innovative energy-saving switch, control lights ON-OFF automatically. A traditional switch is needless.
2. A very slight movement, even human breathing, can be collected, without worrying about a sudden shut-off when light is required.
3. Interference-free with flying insects, falling leaves, air vent and wireless signal (WiFi, Bluetooth, 4G and 5G).
4. Adjustable detection settings, suitable for various places, such as toilets, kitchens, offices, libraries, corridors, etc.



TECHNICAL SPECIFICATION

Input	Operating Voltage	120V-277V AC 50/60Hz
	Stand-by Power	<1W (220V)
	Surge Capacity	L N 1KV
Output	Working Mode	ON/OFF
	Type of Load	Inductive, Resistive, LED Load
	Load Capacity	Resistive: 1000W Inductive: 800w LED Load: 400w
	Max, Surge Capacity	16A Inlay--50A(50% I peak twidth 500us @230Vac full load, cold start)
Sensor Parameters	Operating frequency	5.8 GHz ±75 MHz, ISM band.
	Transmitting power	5mW Max.
	Hold time	5S~30Min
	Detection	100%/75%/50%/25%
	Daylight Sensor	5lux~150lux/Disable Remote
	Detection range (Radius)	Movement: 3-4m
		Slight motion: 3-4m
		Breathing: 2-3m
Mounting height	2.5-4m	
Detecting Angle	360°	
Operating Environment	Operating Temperature	0°C...+50°C
	Storage Temperature/humidity	-40°C...+80°C
Others	Wiring	Port diameter 1.5mm2-4.0mm2
	IP Rating	IP20
	Installation	Ceiling mounted
	Size	110*110*32mm
	Lifetime	5 years warranty

FUNCTIONS

Signal detection instructions: The sensor is designed to detect human presence in a nonsleep state by recognizing activities such as walking, subtle movements (like body shifts or head turns), and even breathing. Motion signal: Activated by significant movements, prompting the sensor to trigger. Slight motion signal: Captures even the slightest movements, including body motion; indicated by a single flash. Breathing signal: When no slight motion signal is detected, the sensor collects breathing signals only and flashes three times upon detecting three effective breathing signals.

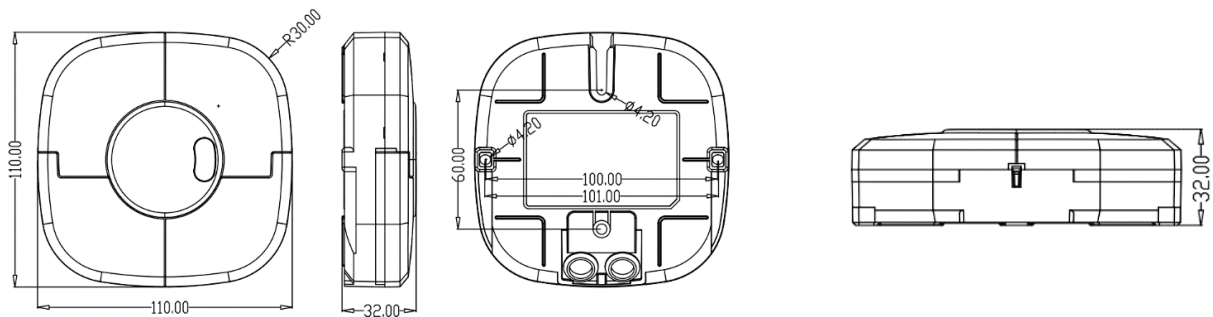


Movement Signal
Active



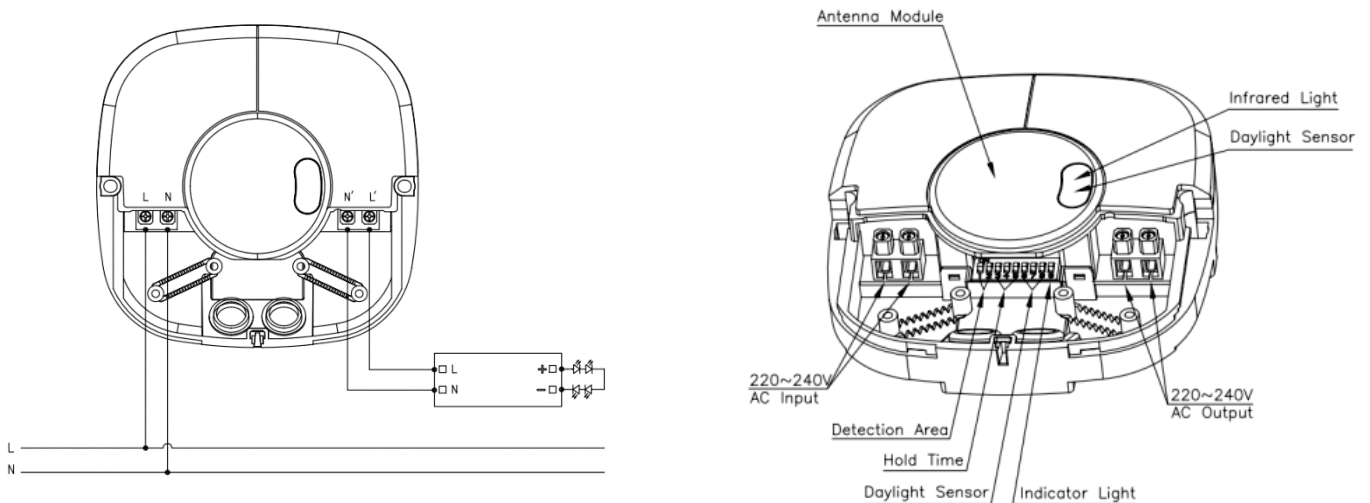
Minor motion & Breathing
signal maintained

DIMENSION (MM)

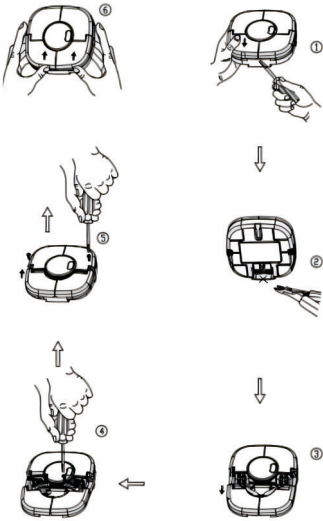


WIRING STRUCTURE

When a single sensor is connected to multiple loads, it is important to take into account both the surge capacity and the detection area.

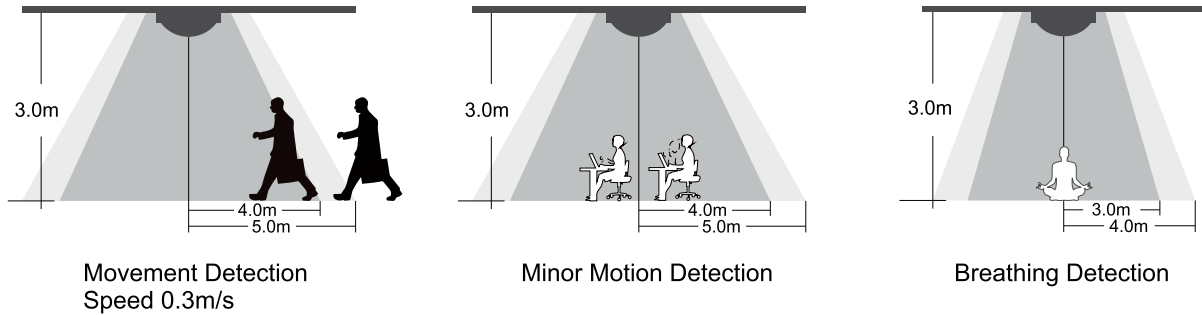


INSTALLATION INSTRUCTION



1. Open the corresponding position of the wiring cover by a screw.
2. Use tools to cut off the thin wall of the lower shell and use it as the outlet
3. Remove the connection cover to access the suitable position, allowing you to configure parameters for the connection box.
4. Complete wiring and setting, and fix the wire pressing device on the lower shell with screws to ensure reliable and orderly wiring
5. Use 4mm screw to fix the product on the required mounting surface
6. After making sure, slide the wiring cover on the assembly by hand.

DETECTION PATTERN



DIP SWITCH SETTING

Detection Area			Hold Time				Daylight Sensor				Indicator light	
1	2		3	4	5		6	7	8		9	
ON	ON	100%	ON	ON	ON	5S	ON	ON	ON	5Lux	ON	open
			ON	-	ON	30S						
			ON	ON	-	1min	-	ON	ON	30Lux		
-	ON	75%	ON	-	-	3min	ON	-	ON	50Lux		
			-	ON	ON	5min						
			-	-	ON	10min	-	-	ON	100Lux		
-	-	25%	-	ON	-	20min	ON	ON	-	150Lux		close
			-	-	-	30min	-	-	-	Disable		

Remark: When using the breath detection function, the hold time should be more than 1 min

*When the setting is switched to Disable, the sensor will activate the light upon detecting motion, regardless of whether there is sufficient ambient light.

Default setting:

The indicator light is currently ON; you have the option to turn it off using either the DIP switch or the LS button on the remote control.

REMOTE SETTINGS (OPTIONAL)

Panel settings	Button	Function Description
		Press "ON/OFF" button. When the load lamp enters the mode normal or off, press "RESET" button and "Auto mode" button to exit the mode normal on or off. No memory for ON/OFF setting after power off. Sensor mode will auto recover after restart power supply.
		Press "reset" button to return all settings back to current DIP settings.
		Press the "Sensor motion" button. Switch from on/off mode to inductive mode (function return subject to the last setting)
		N/A
		N/A
		N/A
		N/A
		N/A
		HS: Turn ON indicator light LS: Turn OFF indicator light
		Light sensor Setting: 5Lux/15Lux/30Lux/50Lux/100Lux/150Lux/ Disable
		N/A
		Hold time Setting: 5S/30S/1min/3min/5min/10min/20min/30min
		N/A
		Detection area Setting: 25%/50%/75%/100%
		Remote Distance Toggling the button can set the distance of remote control controlling sensor

Remote controller/DIP setting switch:

1. Power off, dial the DIP switch, and the setting returns to the current DIP setting.
2. Press any button on the remote and the setting returns to the remote setting.

Initialization:

When power is ON sensor enters self-test mode, and the self-test will be completed after 60 seconds to enter the normal working state. During the initialization, the external motion signal will not be detected, remote control signal not be received

Factory setting:

Detection Area: 100% Hold Time: 1min Daylight Sensor: Disable
Indicator light: ON

APPLICATION NOTE

1. The sensor should be installed by a professional electrician. Please disconnect the main switch during installation.
2. Put the sensor as far as possible from large areas of metal plate, glass and other materials with high medium density to avoid triggering by mistake
3. Avoid using objects that have been vibrating for a long time around the sensor, such as shaking fans, etc.
4. The indicator will flick 3 times after setting by remote successfully.
5. During the initialization, the external motion signal will not be detected, the remote control signal not be received
6. Suggest closing the indicator when in normal use.
7. In a crowded office space, you can choose a hold time of 30 seconds, while in an independent office with fewer occupants, you can opt for a hold time ranging from 1 to 3 minutes.
8. The microwave sensor has a certain penetrating ability to the wall of the building, and the microwave penetrating to the outside of the wall may cause a false alarm if it acts on the moving objects outside the fortified area. In order to avoid triggering by mistake, the installation position and appropriate induction range should be selected during installation.
 - A. When the product is used of room length and width about 2m or less, the detection area should be 25%;
 - B. When the product is used of room length and width about 3m or less, the detection area should be 50%;
 - C. When produce is used of room length and width about 4m or less, the detection area should be 75%;
 - D. When produce is used of room length and width about 5m or more, the detection area should be 100%;



C K Patel Estate, Survey Number 372, Opp
Tata Motors Service Centre, Near Rama Kaka
Deri, Chhani, Vadodara – 391740



+91 9586884885



+91 9979764665



info@sensinova.in



www.sensinova.in